



RAYNERS
TOWN & COUNTRY

'MAXWELL'
HOMEFIELD ROAD, WARLINGHAM

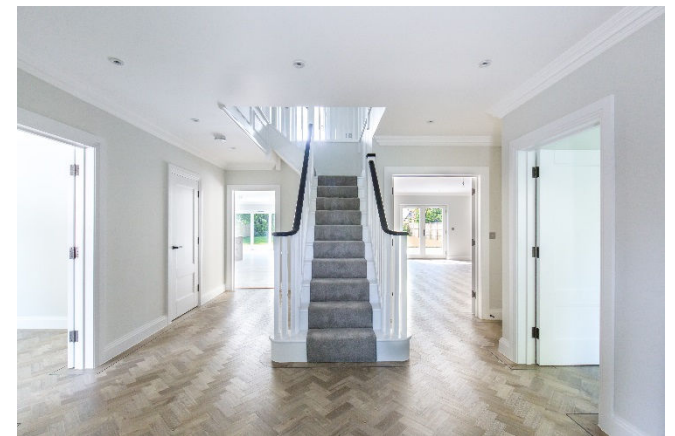
MAXWELL

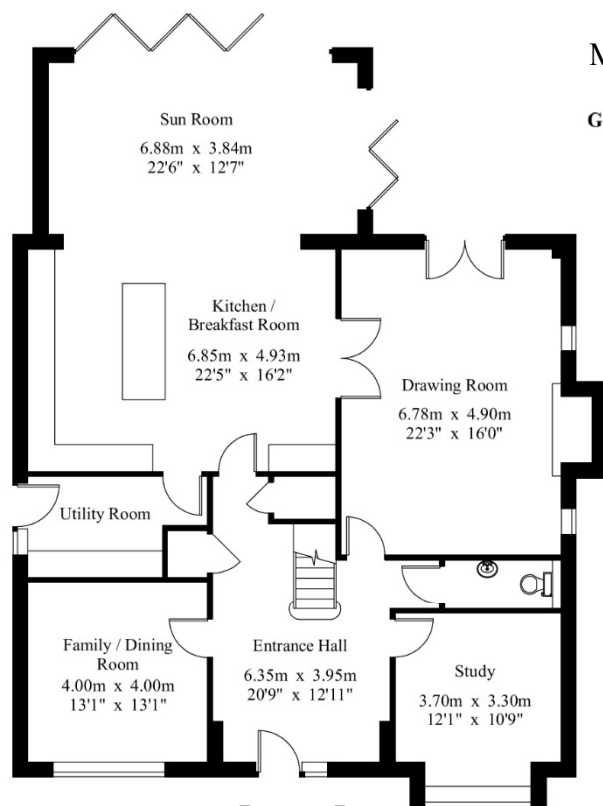
HOMEFIELD ROAD, WARLINGHAM, CR6 9HU

MAXWELL is a brand new spacious five bedroom family house located in Warlingham's most prestigious residential area and providing stylish luxury accommodation set on a level plot in a tucked away position. Homefield Road is a well-regarded private road around half a mile from Warlingham Village centre and less than a mile from Upper Warlingham Station.

The property benefits from a single garage, separate single car port and landscaped gardens to front and rear. The rear garden is south facing. Built by Chartwell Land & New Homes Ltd, the property is finished to an exceptionally high standard and comes with a 10 Year BUILDZONE Warranty.





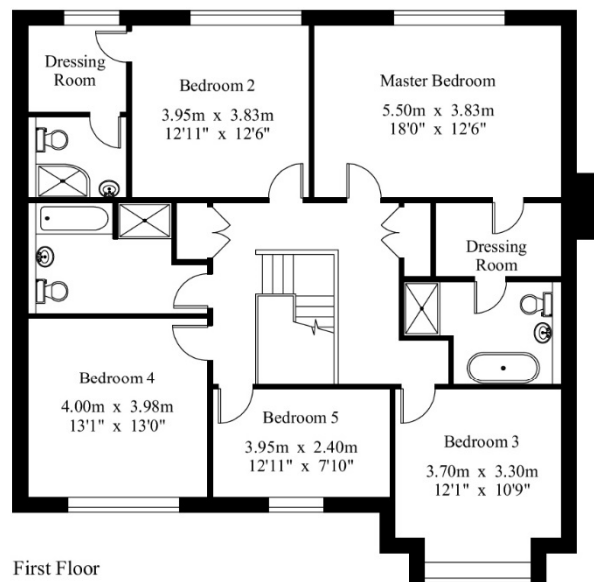


Ground Floor

NB: Externally there is a detached garage 20.6 sqm & adjoining car port/ pergola 13.8 sqm. Plans available on request.

MAXWELL

Gross Internal Area : 297.4 sq.m (3201 sq.ft.)



First Floor



For Identification Purposes Only.

© 2018 Trueplan (UK) Limited (01892) 614 881

Local Authority:
Tandridge District Council

EPC Rating:
Predicted: (89)/ B

Mains services:
Water, Gas, Electricity

Tenure:
Freehold

Builders:
Chartwell Land & New Homes Ltd.
To find out more and see previous developments visit:

www.chartwellpropertygroup.com

CHARTWELL
UNLOCKING LAND | BUILDING BEAUTIFUL HOMES



VIEWING STRICTLY BY APPOINTMENT VIA THE SELLING AGENT

IMPORTANT: we would like to inform prospective purchasers that these sales particulars have been prepared as a general guide only. A detailed survey has not been carried out, nor the services, appliances and fittings tested. Room sizes should not be relied upon for furnishing purposes and are approximate. If floor plans are included, they are for guidance only and illustration purposes only and may not be to scale. If there are any important matters likely to affect your decision to buy, please contact us before viewing the property. R772

www.raynersproperties.com

Caterham
01883 347 446
caterham@raynersproperties.com

Godstone
01883 744 344
godstone@raynerspropertes.com

Warlingham
01883 622 258
warlingham@raynerspropepties.com

Lettings
01883 622 244
lettings@raynersproperties.com

Land & New Homes
01883 744 344
lnh@raynersproperties.com

RAYNERS
TOWN & COUNTRY